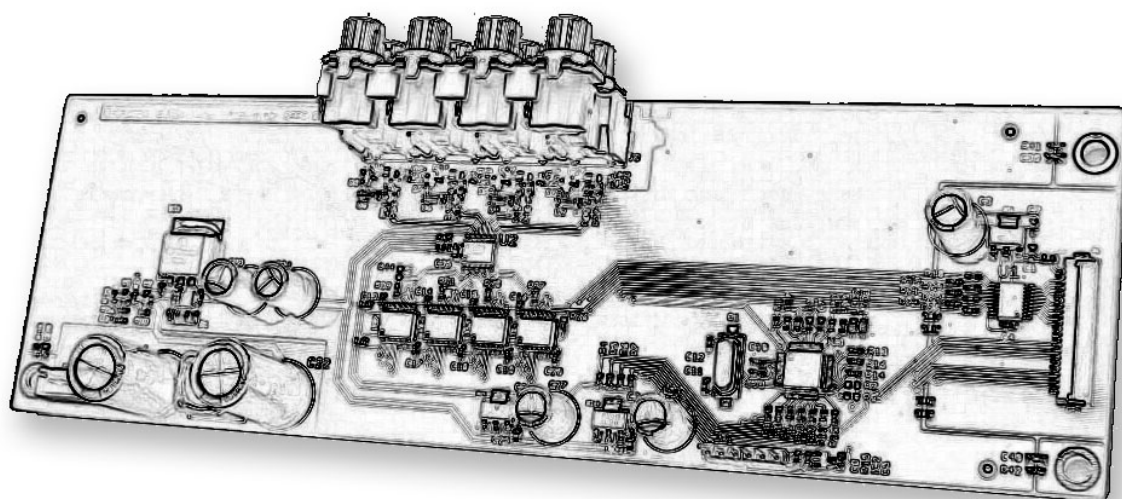


audiopraise

VANITY¹⁰³

Installation Guide



Introduction

The Vanity¹⁰³ modules have been designed as a direct replacement of the original board with analog outputs. Therefore the installation procedure is very easy and doesn't require any special skills or tools. The installation is fully reversible and should only take several minutes. This installation manual applies to both HD and Lite versions.

Tools

You will need a screwdriver (Philips type) of suitable size. Precision pliers can be handy as well.



Procedure

Let's start with the Oppo BDP-103 player. Don't forget to unplug the power cable and leave the player for a while to allow the capacitors in the power supply to discharge!



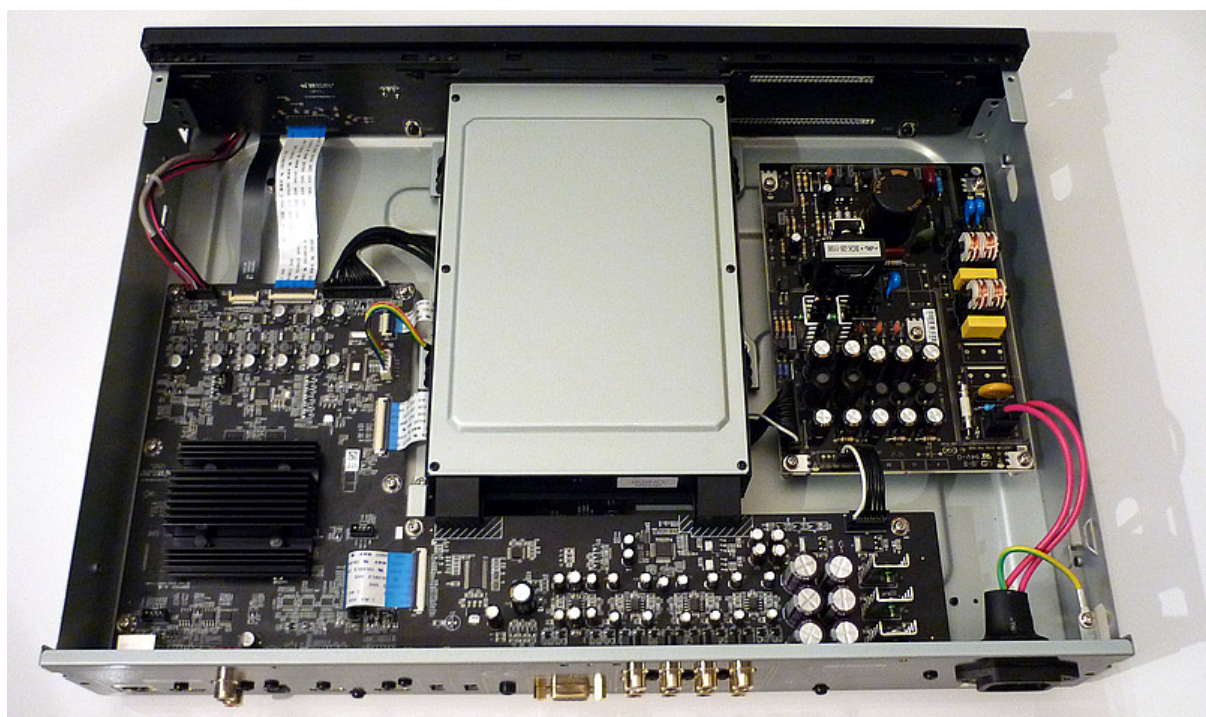
Remove 2 screws on both sides of the player.



Then proceed with 10 screws on the back panel.



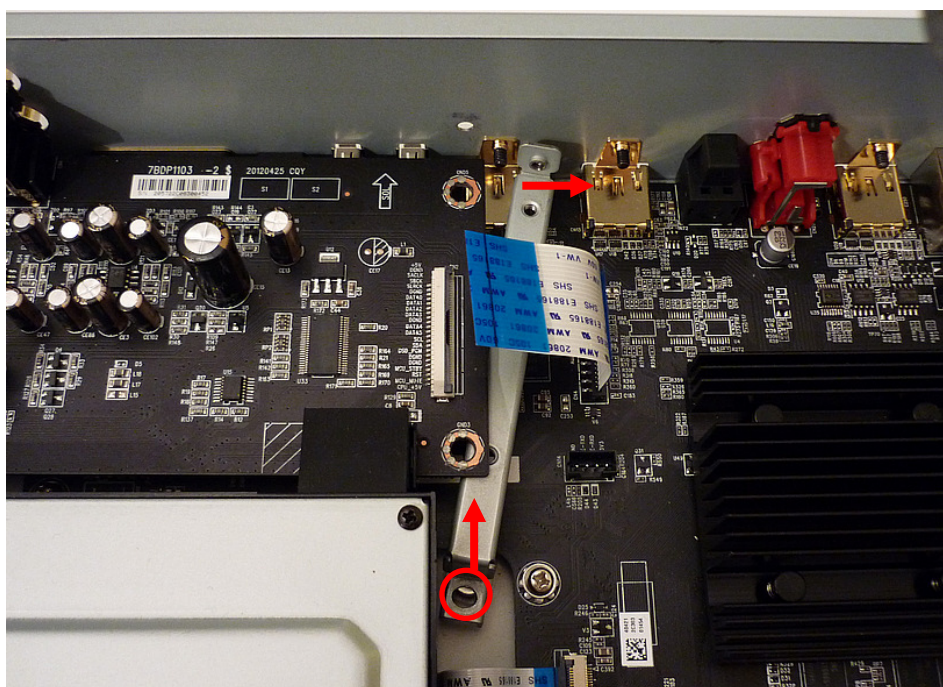
Now you can remove the top cover.



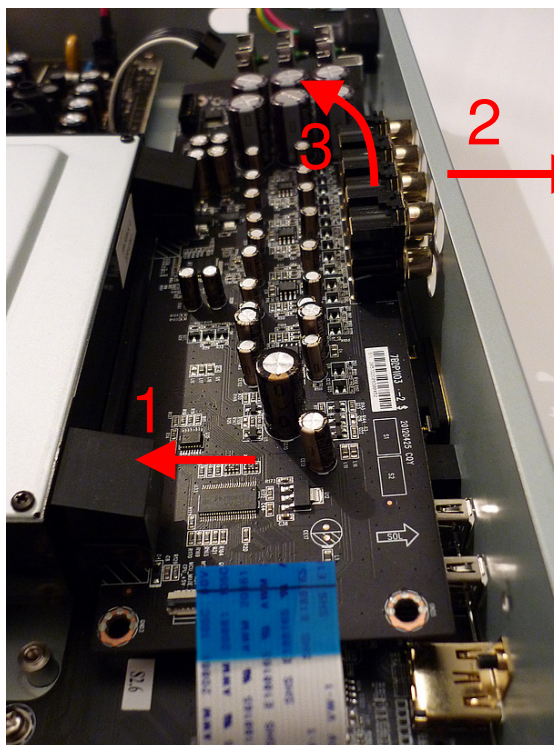
Carefully disconnect the data flat foil cable from the analog board. Release the connector lock first and pull the cable out. Then disconnect also the power cable from the analog board. When both cables are disconnected, remove 3 screws holding the analog board.



In this step remove the last screw on the metal L-shaped holder and carefully release it from its place. It is necessary to unhook the holder and move the upper end away from the analog board.



Now the analog board can be removed. Shift the board slightly towards the front side of the player in order to release the RCA connector block from the back panel (1). Then tilt the board with the RCA block upwards while you gently pull the back panel away from the RCA connector (2+3). Then lift the board out of the player.

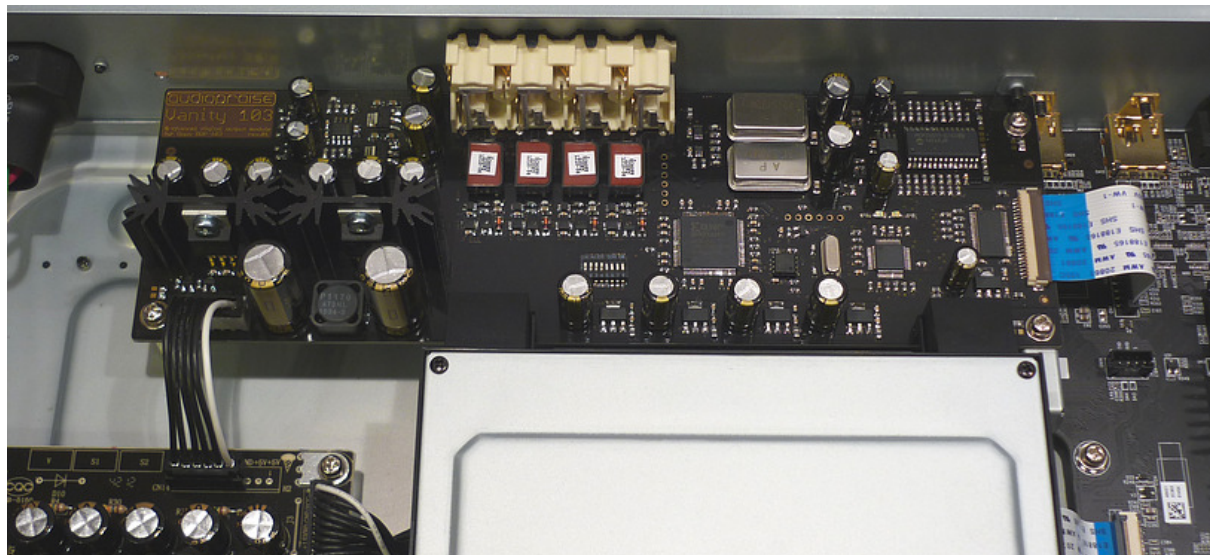


Insert the Vanity¹⁰³ module just in reverse order of the analog board removal. Fit the L-shaped holder and fix it with the one screw to the bottom chassis and the one screw to the back panel. This may require some practice.

Put back the 3 screws holding the board, but don't tighten them all the way yet. Leave them a bit loose, so that the board can be precisely positioned along the back panel. Attach the RCA connector block of the Vanity¹⁰³ module to the back panel with the 3 screws and tighten them well. The screw in the following picture is not used with the Vanity¹⁰³ modules.



Check position of the Vanity¹⁰³ module in the back panel and tighten the 3 screws holding the module. Carefully reconnect the data and power connector (same as the disconnection, performed in reverse). Precisely align the flat data cable within the connector and secure the connector lock.



Congratulations! You have completed the installation. Now you can finish the player assembly.

Should you need any information beyond this installation manual, don't hesitate to contact us via email or have a look on our forum.

ap@audiopraise.com

<http://www.audiopraise.com/forum/>

Disclaimer

Audiopraise and its partners accept no responsibility for damage to the player, voiding your warranty or personal injury. Always unplug the power cable before removing the top cover. Follow the electrostatic discharge precautions when manipulating with electronic boards and components.